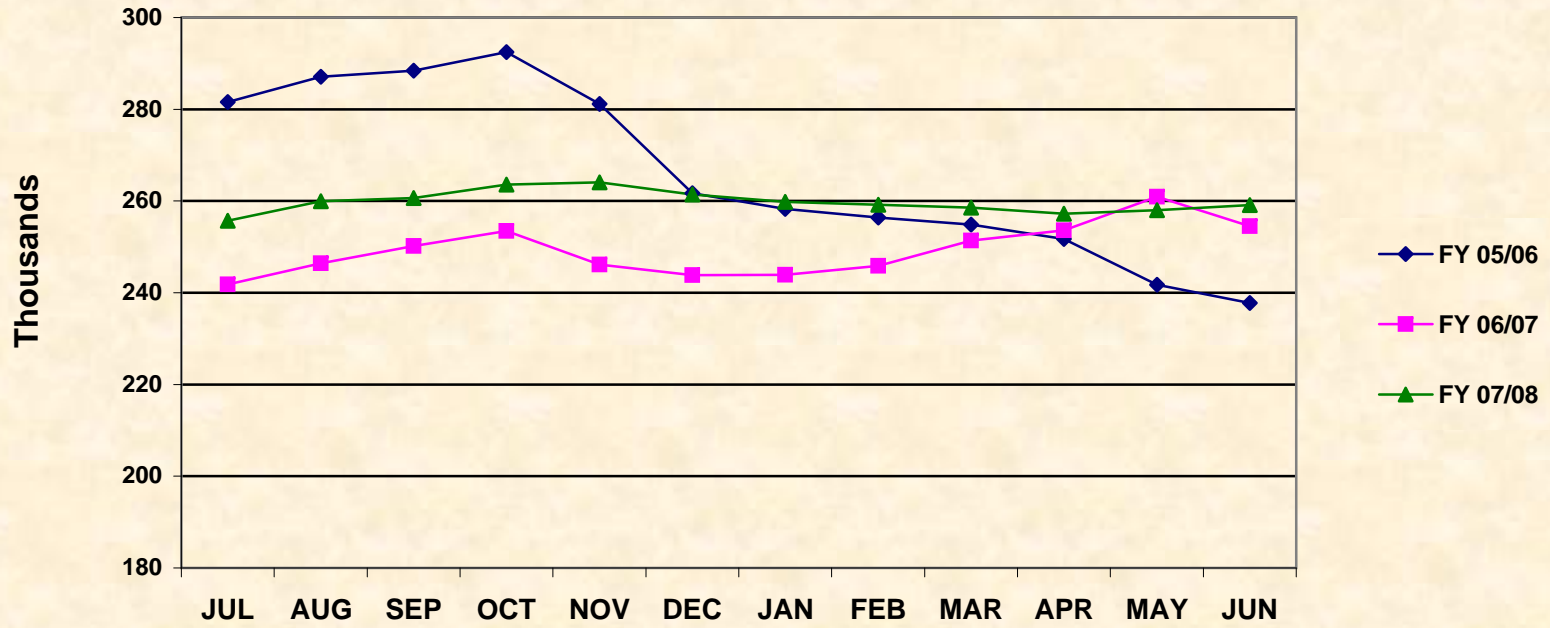


FOOD STAMP CASES BY FISCAL YEAR

STATEWIDE MONTHLY TOTALS

MONTH	FY 02/03	FY 03/04	FY 04/05	FY 05/06	FY 06/07	FY 07/08
JUL	218,661	243,677	268,507	281,595	241,815	255,713
AUG	223,230	244,982	267,012	287,066	246,449	259,973
SEP	224,357	247,310	268,877	288,412	250,204	260,642
OCT	229,028	254,211	273,271	292,476	253,469	263,587
NOV	228,197	257,250	274,545	281,150	246,164	264,036
DEC	230,002	257,427	275,136	261,709	243,849	261,399
JAN	232,422	258,093	276,308	258,251	243,908	259,798
FEB	232,867	256,883	273,398	256,373	245,866	259,160
MAR	232,173	258,794	274,342	254,835	251,351	258,574
APR	234,357	262,864	275,996	251,710	253,576	257,209
MAY	236,733	265,018	277,280	241,724	260,957	258,019
JUN	238,974	266,189	280,039	237,754	254,513	259,132
Average	230,083	256,058	273,726	266,088	249,343	259,770
Totals	2,761,001	3,072,698	3,284,711	3,193,055	2,992,121	3,117,242

FOOD STAMP CASES BY STATE FISCAL YEAR Statewide Monthly Totals



FOOD STAMP RECIPIENTS BY FISCAL YEAR

STATEWIDE MONTHLY TOTALS

MONTH	FY 02/03	FY 03/04	FY 04/05	FY 05/06	FY 06/07	FY 07/08
JUL	577,909	639,699	691,851	715,745	599,958	615,125
AUG	589,084	641,678	686,291	728,311	612,560	634,598
SEP	591,553	646,446	691,533	731,524	621,996	635,525
OCT	604,816	662,237	701,716	740,319	629,995	642,999
NOV	600,518	668,144	703,904	707,119	611,971	643,621
DEC	605,568	666,949	704,665	654,568	604,611	636,432
JAN	612,422	669,067	706,561	642,222	610,031	631,442
FEB	612,373	664,544	696,852	635,855	601,512	629,503
MAR	609,505	668,074	699,092	632,240	616,057	628,541
APR	615,988	678,049	702,829	624,623	620,234	624,857
MAY	621,031	682,388	705,451	597,370	639,029	625,726
JUN	626,707	685,202	712,074	588,486	618,793	628,129
Average	605,623	664,373	700,235	666,532	615,562	631,375
Totals	7,267,474	7,972,477	8,402,819	7,998,382	7,386,747	7,576,498

FOOD STAMP RECIPIENTS BY STATE FISCAL YEAR

Statewide Monthly Totals

