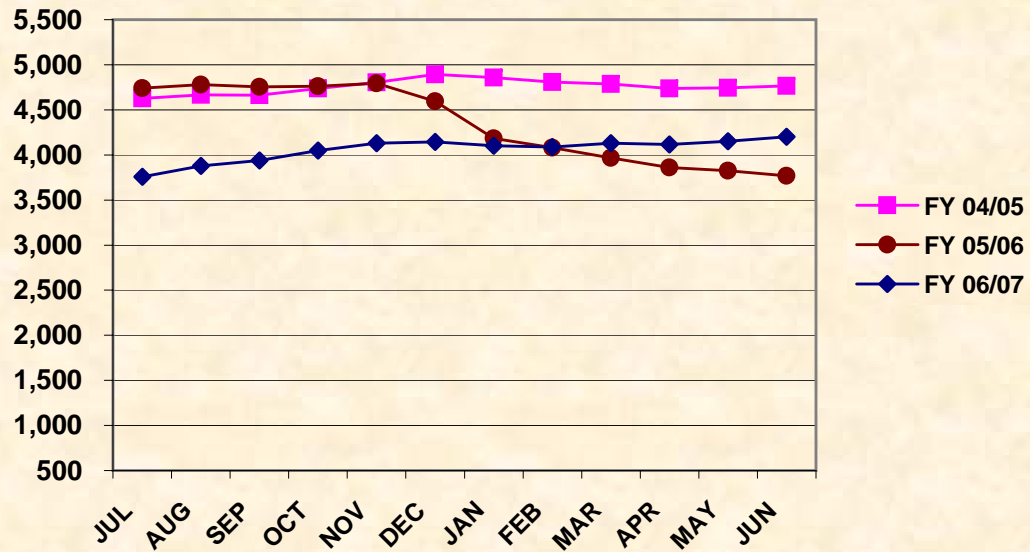


KCSP CASES BY FISCAL YEAR

STATEWIDE MONTHLY TOTALS

MONTH	FY02/03	FY03/04	FY 04/05	FY 05/06	FY 06/07
JUL	2,999	3,992	4,628	4,739	3,757
AUG	3,204	4,037	4,667	4,780	3,879
SEP	3,361	4,129	4,663	4,754	3,939
OCT	3,509	4,261	4,738	4,763	4,050
NOV	3,626	4,313	4,805	4,795	4,129
DEC	3,761	4,425	4,894	4,594	4,145
JAN	3,795	4,427	4,858	4,182	4,103
FEB	3,829	4,440	4,807	4,080	4,087
MAR	3,814	4,455	4,788	3,966	4,131
APR	3,843	4,508	4,736	3,860	4,117
MAY	3,879	4,569	4,745	3,826	4,153
JUN	3,893	4,596	4,767	3,768	4,200
Average	3,626	4,346	4,758	4,342	4,058
Total	43,513	52,152	57,096	52,107	48,690

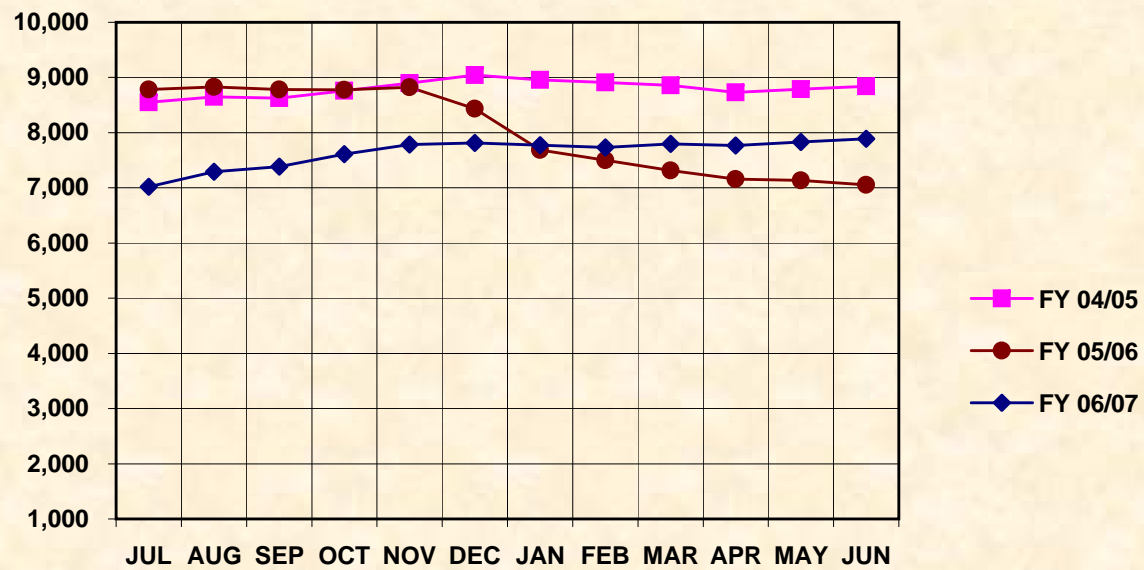
KCSP Cases by Fiscal Year Statewide Monthly Totals



KCSP RECIPIENTS BY FISCAL YEAR STATEWIDE MONTHLY TOTALS

MONTH	FY 02/03	FY 03/04	FY 04/05	FY 05/06	FY 06/07
JUL	5,525	7,344	8,548	8,783	7,022
AUG	5,878	7,435	8,649	8,831	7,289
SEP	6,141	7,587	8,628	8,782	7,384
OCT	6,439	7,818	8,758	8,778	7,609
NOV	6,646	7,907	8,896	8,821	7,787
DEC	6,906	8,163	9,042	8,437	7,814
JAN	6,973	8,159	8,959	7,687	7,774
FEB	7,035	8,184	8,907	7,498	7,730
MAR	7,013	8,201	8,858	7,316	7,798
APR	7,056	8,311	8,732	7,161	7,769
MAY	7,110	8,402	8,786	7,134	7,832
JUN	7,147	8,470	8,843	7,057	7,892
Average	6,656	7,998	8,801	8,024	7,642
Actual	79,869	95,981	105,606	96,285	91,700

KCSP RECIPIENTS BY STATE FISCAL YEAR Statewide Monthly Totals



KCSP PAYMENTS ISSUED BY FISCAL YEAR

STATEWIDE MONTHLY TOTALS

MONTH	FY 02/03	FY 03/04	FY 04/05	FY 05/06	FY 06/07
JUL	\$1,240,192	\$1,652,044	\$1,918,122	\$1,972,075	\$1,986,309
AUG	\$1,315,892	\$1,668,502	\$1,942,305	\$1,988,691	\$2,054,399
SEP	\$1,390,045	\$1,717,822	\$1,944,324	\$1,964,396	\$2,089,832
OCT	\$1,454,134	\$1,768,169	\$1,975,940	\$1,960,992	\$2,141,562
NOV	\$1,501,431	\$1,778,697	\$2,002,942	\$1,971,388	\$2,201,540
DEC	\$1,551,415	\$1,837,477	\$2,032,574	\$1,884,802	\$2,210,963
JAN	\$1,561,135	\$1,819,568	\$1,998,067	\$1,709,480	\$2,185,975
FEB	\$1,573,364	\$1,833,379	\$1,993,252	\$1,677,437	\$2,179,395
MAR	\$1,576,526	\$1,834,639	\$1,977,290	\$1,638,772	\$2,203,106
APR	\$1,579,573	\$1,865,627	\$1,946,895	\$1,600,853	\$2,180,917
MAY	\$1,598,712	\$1,874,818	\$1,964,158	\$1,594,857	\$2,214,889
JUN	\$1,599,532	\$1,896,612	\$1,982,965	\$1,576,946	\$2,223,030
Average \$	\$1,495,163	\$1,795,613	\$1,973,236	\$1,795,057	\$2,155,993
Total \$	\$17,941,951	\$21,547,354	\$23,678,834	\$21,540,689	\$25,871,917

KCSP PAYMENTS ISSUED BY STATE FISCAL YEAR Statewide Monthly Totals

